



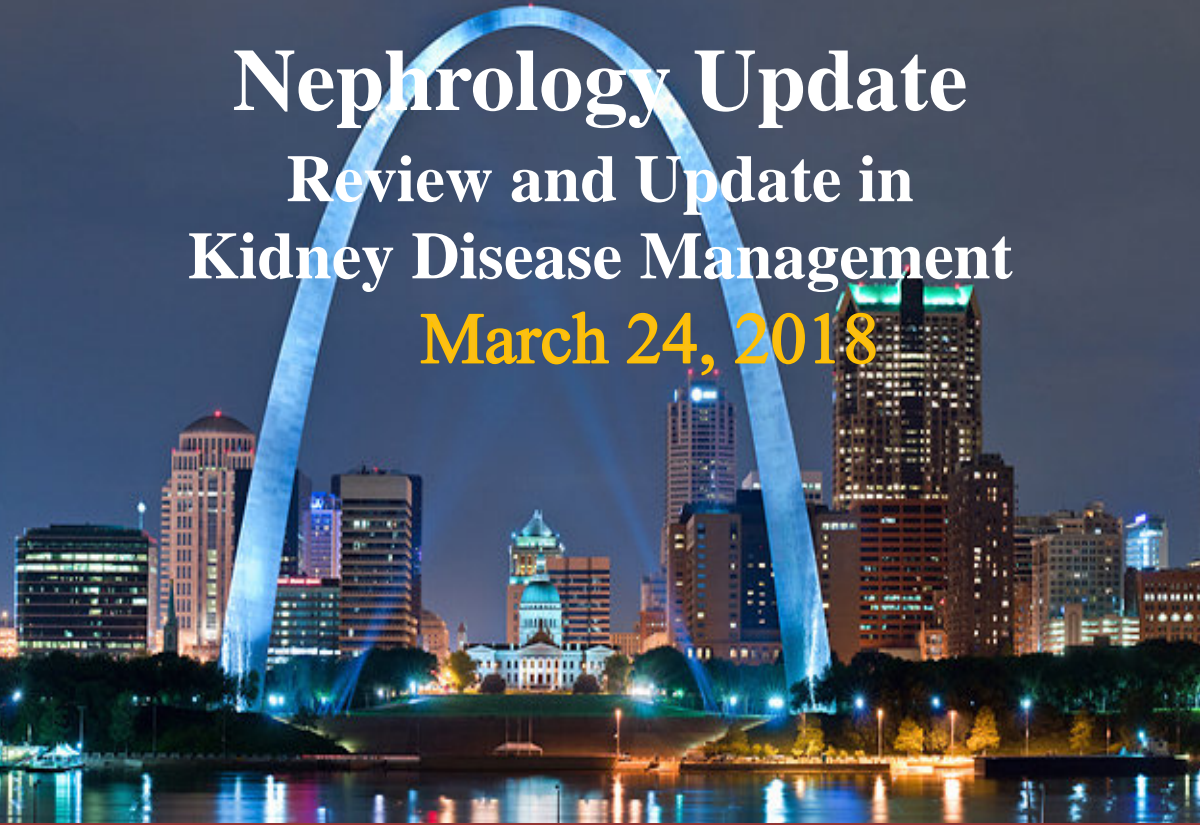
Washington University in St. Louis

SCHOOL OF MEDICINE

Nephrology Update

Review and Update in Kidney Disease Management

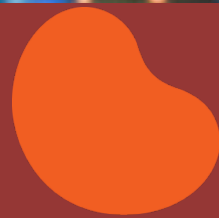
March 24, 2018



Auditorium at City Place
1 City Place Drive
St Louis, MO

Jointly Provided by the Division of Nephrology at
Washington University School of Medicine (WUSM)
in St. Louis and the National Kidney Foundation
(NKF)

Credit Provided by Washington University School of
Medicine in St. Louis, Continuing Medical Education



National
Kidney
Foundation[®]



Nephrology Update

This live activity is designed for primary care physicians including health care professionals, physicians in training, pharmacists, dietitians, nephrologists, nurses, and nurse practitioners who are involved in the care of patients with kidney disease. The intended result of this activity is increased knowledge, competence, performance, and improved patient care.

At the conclusion, participants will be able to apply the latest clinical trials results in the management of patients with chronic kidney disease.

- Accurately diagnose and evaluate patients with chronic kidney disease
- Appropriately manage anemia in chronic kidney disease
- Identify the new agents that can be used as potassium binding agents
- Manage common infections in the dialysis population
- Describe mechanisms of acute kidney injury and its implications for progression to chronic kidney disease.
- List and understand the various options for renal replacement therapy

Washington University School of Medicine Faculty

Timothy Yau, MD (Course Director)

Assistant Professor of Medicine, Division of Nephrology

Steven Cheng, MD, Associate Professor of Medicine

Co-Director, Renal Fellowship Training Program

Daniel Coyne, MD, Professor of Medicine

Director, Hemodialysis, Chromalloy American Kidney Center and

Outpatient Renal Clinics

Seth Goldberg, MD, Assistant Professor of Medicine

Patricia Kao MD, MS, Associate Professor of Medicine;

Brent W. Miller, MD, Associate Professor of Medicine;

Medical Director, Home Dialysis

Planning Committee

Timothy Yau, MD, Course Director

Andrew Crannage, PharmD, Associate Professor Pharmacy Practice

Division of Acute Care Pharmacy, St. Louis College of Pharmacy

Lisa Koester, RN, MSN, CS, ANP, Nurse Practitioner

Barnes-Jewish Hospital Dialysis Center

Laura Fine, Executive Director, National Kidney Foundation

Suzanne McComb, Program Manager, National Kidney Foundation





Nephrology Update Agenda

- 7:30 am Continental Breakfast
- 8:00 am **Primary Care Approach to CKD Detection, Management, and Delaying Progression**
Timothy Yau, MD
- 8:30 am **Management of Anemia in CKD and Dialysis**
Dan Coyne, MD
- 9:00 am **Hypertension Update**
Patricia Kao, MD
- 9:30 am **Break**
- 10:00 am **Update on Novel Potassium Binding Agents**
Steven Cheng, MD
- 10:30 am **Vitamin D, PTH, and Bone Disease in CKD**
Seth Goldberg, MD
- 11:00 am **Home Modalities for Renal Replacement Therapy**
Brent Miller, MD
- 11:30 pm **Adjourn**





ADVANCE REGISTRATION

Nephrology Update for the Primary Care Provider Saturday, March 24, 2018

To ensure proper spelling of name, please print clearly.

First Name	Initial	Last Name	Degree
------------	---------	-----------	--------

Address

City/State/Zip

Office Phone	Fax
--------------	-----

Email (Required)

Specialty

REGISTRATION FEES:	<u>By March 17</u>	<u>After March 17</u>
Physician	\$95	\$115
Non Physician	\$75	\$95

Fee includes enrollment, continuing education credits, continental breakfast, refreshment breaks and self-parking.



CONVENIENT WAYS TO REGISTER:

- ONLINE - secure and immediate payment confirmation at <http://cme.wustl.edu>
- MAIL - completed form with check payable to: Washington University
CME/CSRB 2214, CB 8063
660 S. Euclid Ave.
St. Louis, MO 63110

Registration/Payment Policy: Your full payment in advance completes your registration and ensures your enrollment in this course. Opportunities for on-site registration are limited and may be unavailable. To inquire about the availability to register on-site, please contact the CME office.

Cancellations: Seminar registration fee less \$25 administrative charge is refundable if cancellation is received in writing by March 19, 2018.



Accreditation:



JOINTLY ACCREDITED PROVIDER™
INTERPROFESSIONAL CONTINUING EDUCATION

In support of improving patient care, this activity has been planned and implemented by Washington University School of Medicine in St. Louis and the National Kidney Foundation. Washington University School of Medicine in St. Louis is jointly accredited by the Accreditation Council for Continuing Medical Education (ACCME), the Accreditation Council for Pharmacy Education (ACPE), and the American Nurses Credentialing Center (ANCC), to provide continuing education for the healthcare team.

Credit Available for this Activity:

AMA (American Medical Association): Washington University School of Medicine in St. Louis designates this live activity for a maximum of 3 *AMA PRA Category 1 Credits™*. Physicians should claim only the credit commensurate with the extent of their participation in the activity.

ANCC (American Nurses Credentialing Center): Washington University School of Medicine in St. Louis designates this live activity for a maximum of 3 contact hours.

ACPE (Accreditation Council for Pharmacy Education): ACPE credit will be awarded for this activity.

Disclosure Policy:

It is the policy of Washington University School of Medicine, Continuing Medical Education, that planners, faculty and other persons who may influence content of this CME activity disclose all relevant financial relationships with commercial interests in order for CME staff to identify and resolve any potential conflicts of interest prior to the educational activity. Faculty must also disclose any planned discussion of off-label/unapproved uses of drugs or devices during their presentation. Detailed disclosures will be made in activity handout materials.

Registration Fees:

-Physician: \$95

-Allied Health Professional (AHP) including residents/fellows/nurses: \$75

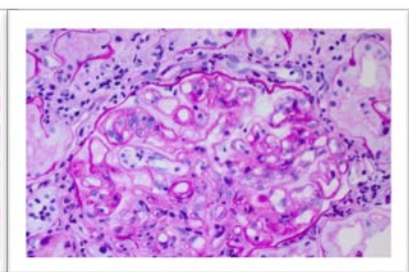
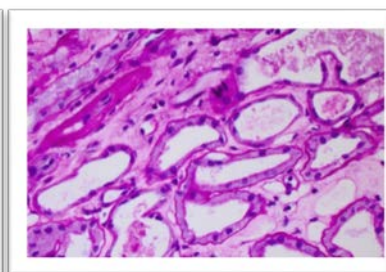
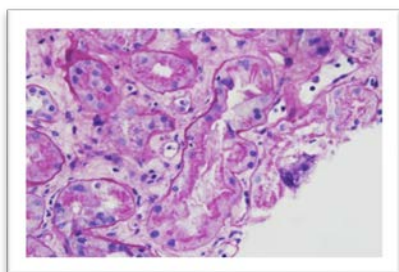
To Register :

Online secure and immediate payment confirmation.

<http://cme.wustl.edu>



Tx Epi Research Collaboration





Washington University in St. Louis
SCHOOL OF MEDICINE

Division of Nephrology, CB 8126
660 S. Euclid Ave.
St. Louis, MO, 63110



Nephrology Update

March 24, 2018

CME credit available ONLINE at
<http://cme-online.wustl.edu>

Visit our website for other CME activities
<http://cme.wustl.edu>



follow us at @wustlcme